



# GAT MONTHLY MEMBERSHIP PROGRESS REPORT

Results as of: 5/31/2023

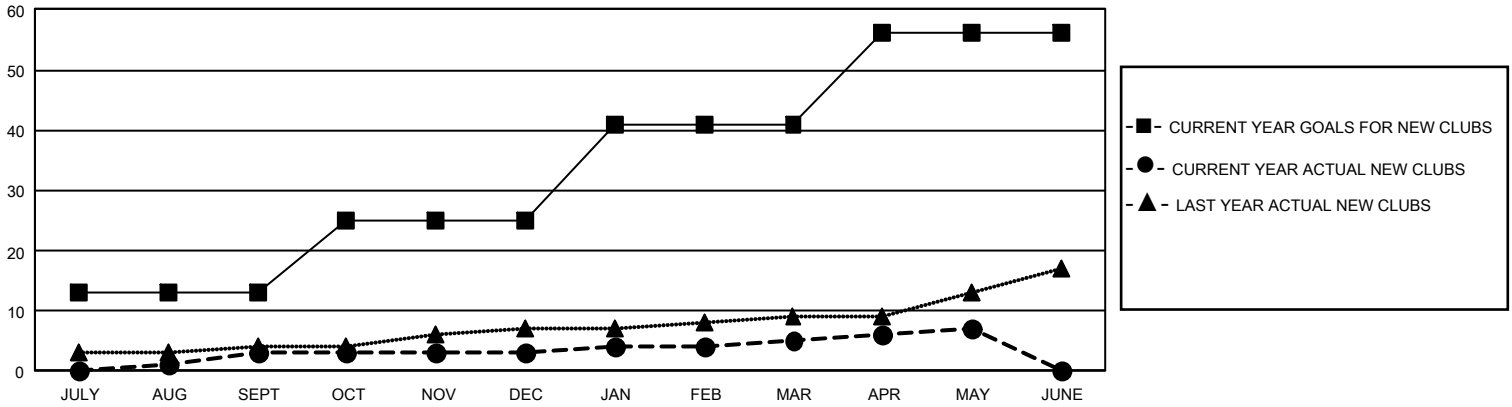
## GMT Constitutional Area 1, Group B

REPORT DOES NOT INCLUDE CLUBS IN UNDISTRICTED AREAS.

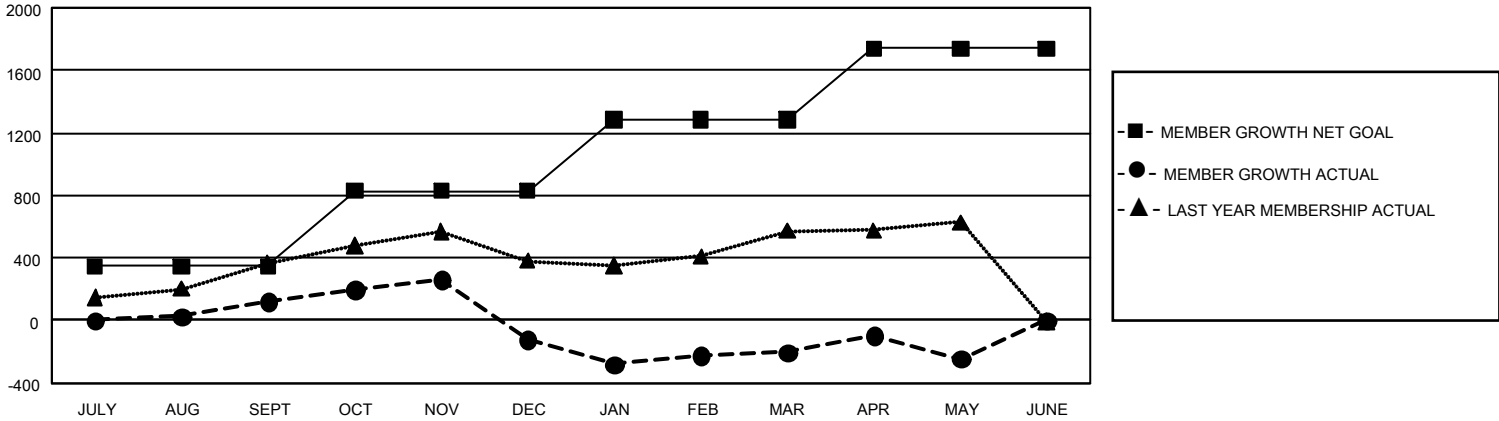
Clubs			
RESULTS FOR 2022-2023			
QUARTER	NEW CLUB GOAL	NEW CLUBS	DROPPED CLUBS
JULY/AUG/SEPT	39	3	5
OCT/NOV/DEC	36	0	17
JAN/FEB/MAR	48	2	4
APR/MAY/JUNE	45	2	2

Members			
RESULTS FOR 2022-2023			
QUARTER	MEMBER GROWTH NET GOAL	MEMBER GROWTH ACTUAL	DROPPED MEMBERS ACTUAL (including transfers)
JULY/AUG/SEPT	345	1,023	803
OCT/NOV/DEC	482	779	945
JAN/FEB/MAR	460	928	849
APR/MAY/JUNE	452	696	646

GOALS AND ACTUAL NEW CLUBS CUMULATIVE



GOALS AND ACTUAL MEMBERS CUMULATIVE



DROPPED CLUBS: 28	
<b>DROPPED MEMBERS</b>	
DECEASED	348
CLUB CANCELLED	180
OTHER	2,719
<b>TOTAL</b>	<b>3,247</b>

581 CLUBS OF 909 ADDED 1 OR MORE NEW MEMBERS

[CLICK HERE FOR CUMULATIVE MEMBERSHIP DATA](#)

GENDER DISTRIBUTION	
MALE	13,688 (57.33%)
FEMALE	10,164 (42.57%)
NON BINARY	2 (0.01%)
PREFER NOT TO ANSWER	20 (0.08%)
TOTAL FAMILY UNIT MEMBERS	4,702
FAMILY MEMBERS PAYING HALF DUES	2,482